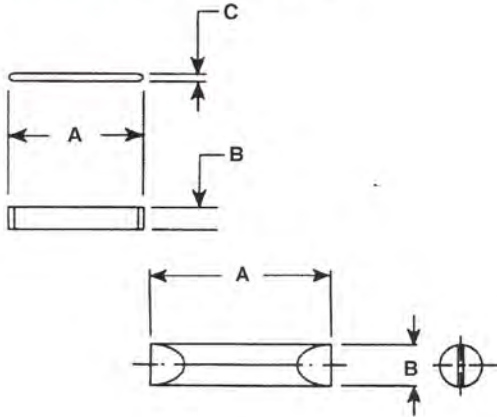


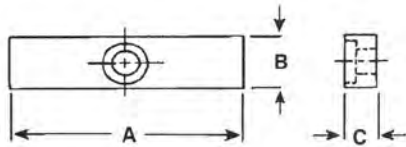
SLEEPER & HARTLEY

COILING POINTS



STANDARD

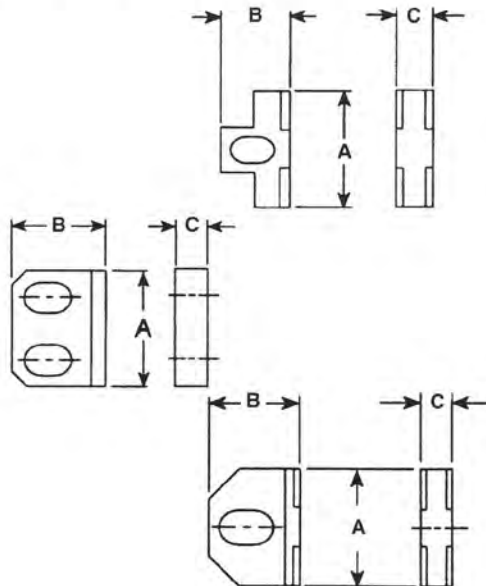
SERIES	SIZE	A	B	C
692-7900	00	1-3/16	1/8	
720-668	0	1-1/8	3/16	
790	1/2	1-1/4	3/16	
721-7910	1	1-3/4	3/8	
791	1-1/3	2-1/2	3/8	
676	1-1/2	2-11/16	5/8	
676	1-1/2	2-11/16	3/4	1/2
667	2	2-11/16	3/4	1/2
667	2	2-11/16	5/8	
669	2-1/2	3-1/2	3/4	
723	3	3-3/4	1	



TORSION

SERIES	SIZE	A	B	C
7900	00	1-3/8	3/8	1/8
790	1/2	2-1/8	7/16	5/32
7910	1	2-1/8	9/16	7/32
791	1-1/3	2-1/2	5/8	9/32

BLOCK GUIDES

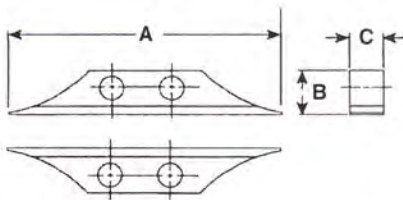
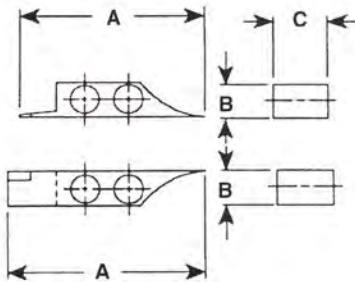
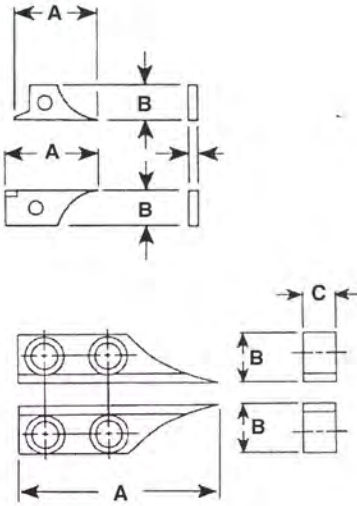


STANDARD

SERIES	SIZE	A	B	C	DESCRIPTION
720	0	1/2	13/32	1/8	RECTANGULAR
790	1/2	13/16	1/2	3/16	RECTANGULAR
7910	1	1-1/8	21/32	5/16	RECTANGULAR
721-S	1	7/8	9/16	5/16	C' BORED T TYPE
721-522	1	1	5/8	1/4	T TYPE
721-22	1	7/8	9/16	1/4	T TYPE
721-150	1	7/8	9/16	5/16	C' BORED T TYPE
666	1	7/8	11/16	1/4	RECTANGULAR
791	1-1/3	1-7/16	1	5/16	T TYPE
676	1-1/2	1-5/8	1-1/4	7/16	RECTANGULAR
676	1-1/2	1-3/16	1	3/8	T TYPE
722	2	1-11/16	1	7/16	T TYPE
667	2	1-5/8	1-1/4	7/16	RECTANGULAR
669	2-1/2	2-1/8	1-1/8	5/8	T TYPE
332	2-1/2	2-1/8	1-5/8	5/8	RECTANGULAR
723	3	2-5/8	1-1/2	3/4	T TYPE

SLEEPER & HARTLEY

GUIDES



PRELIMINARY & FINAL

SERIES	SIZE	A	B	C	DESCRIPTION
692	00	15/16	3/8	3/32	FINAL
692	00	7/8	3/8	3/32	FINAL
692	00	31/32	3/8	5/16	PRELIMINARY
7900	00	1-15/16	7/16	13/32	PRELIMINARY
7900	00	1-21/32	7/16	3/16	FINAL
299	0	1-31/64	3/8	1/4	PRELIM.-FINAL
720	0	1-31/64	1/2	3/8	PRELIM.-FINAL
668	0	63/64	3/8	5/16	PRELIM.-FINAL
790	1/2	1-3/4	1/2	7/16	PRELIM.-FINAL
666	1	2-1/8	23/32	1/2	PRELIM.-FINAL
721	1	3-1/4	23/32	1/2	PRELIM.-FINAL
7910	1	2-7/16	21/32	5/8	PRELIM.-FINAL
791	1-1/3	3-9/16	3/4	11/16	PRELIM.-FINAL
676	1-1/2	4-5/8	3/4	13/16	PRELIM.-FINAL
667	2	5-5/8	1-1/4	13/16	PRELIM.-FINAL
722	2	5-5/16	1-1/4	13/16	PRELIM.-FINAL
723	3	7-7/16	1-3/4	1-1/2	PRELIM.-FINAL

MAKES SET UP AND ALIGNMENT EASY, DOES THE WORK OF THE BLOCK GUIDE AND CAP AT THE SAME TIME. SPECIFY HAND.

EXTENDED FINAL GUIDES

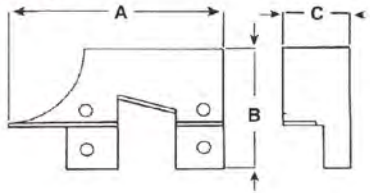
SERIES	SIZE	A	B	C
790	1/2	2-17/32	1/2	7/16
790	1/2	2-15/32	1/2	7/16

INTERMEDIATE

SERIES	SIZE	A	B	C
668	0	1-3/4	3/8	5/16
666-668	1	3-5/8	23/32	1/2
721	1	4-3/8	23/32	1/2
791	1-1/3	4	3/4	11/16
676	1-1/2	7	1-1/4	13/16
667	2	7	1-1/4	13/16
722	2	8-3/8	1-1/4	13/16
723	3	11-3/4	1-3/4	1-1/2

SLEEPER & HARTLEY

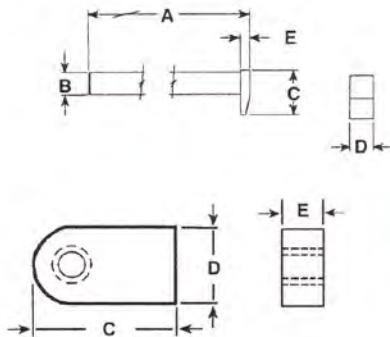
GUIDES



HOLDBACK

SERIES	SIZE	A	B	C
7900	00	1-15/31	1/5/16	7/8
790	1/2	2-15/32	1-1/8	5/8
7910	1	3-7/16	2	1-1/4
791	1-1/3	3-15/16	2-1/2	1-1/2

PITCH TOOLS

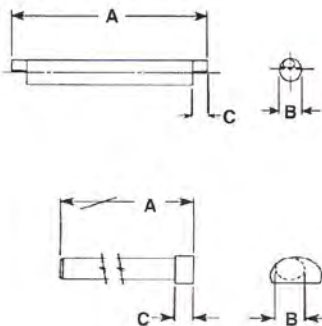


STANDARD

SERIES	SIZE	A	B	C	D	E
692	00	3-1/2	1/8	1/4	1/8	1/16
7900	00	4	3/16	7/16	3/16	1/8
668-720	0	3-5/16	3/16	11/32	3/16	1/16
790	1/2			11/16	3/8	1/8
666-721	1			11/16	3/8	1/8
7910	1	6-1/4	7/16	15/16	5/8	3/16
676	1-1/2			1-9/16	3/4	1/4
722	2			1-5/16	3/4	1/4
723	3			2	1-1/4	3/8

ARBORS

COILING DIA. AND R.H. OR L.H.

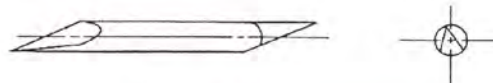


SINGLE OR DOUBLE END OR OVERSIZE

SERIES	SIZE	A	B	C
692-7900	00	2-1/2	1/8	3/32
720-668	0	2-1/4	3/16	1/8
790	1/2	2-9/16	1/4	3/16
721-7910	1	3	3/8	1/4
791	1-1/3	5	5/8	5/16
676	1-1/2	5	1/2	5/16
722-667	2	5	3/4	3/8
723	3	6-3/4	1-1/8	3/16
	4	7	1-1/4	1

PENCIL ARBORS

IDEAL FOR LARGE WIRE AND SMALL INDEX APPLICATIONS.
AVAILABLE FOR ALL MACHINES



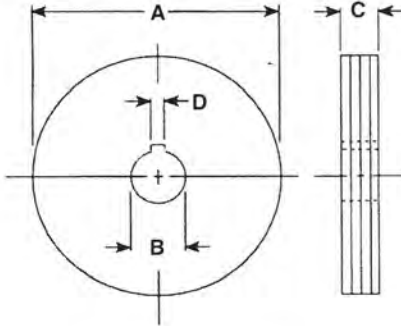
STANDARD

SPECIFY: R.H. OR L.H. OR POINT ONLY

SLEEPER & HARTLEY

FEED ROLLS

SUPPLIED IN STEEL OR CARBIDE UP TO #2 SIZE
BEYOND THIS, STEEL IS RECOMMENDED.



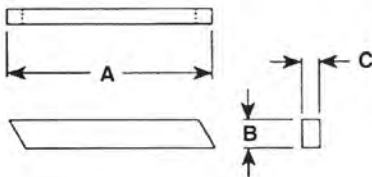
SPECIFY: MACH. SERIES AND SIZE, NUMBER OF
GROOVES AND THE SIZE AND SHAPE OF THE
MATERIAL BEING PROCESSED.

STANDARD

SERIES	SIZE	A	B	C	D
692	00	1	3/8	3/4	1/8x1/16
7900	00	1-1/4	1/2	5/8	1/8x1/16
299	0	1-1/2	7/16	1/4	1/8x1/16
668	0	1-1/2	7/16	5/16	1/8x1/16
720	0	2	1	3/8	1/8x1/16
790	1/2	2	5/8	3/8	3/16x3/32
666	1	3	11/16	1/2	3/16x3/32
7910	1	3	1-1/8	43/64	1/4x1/8
721	1	4	1-3/4	1/2	1/4x5/32
791	1-1/3	4-1/2	1-1/4	11/16	5/16x3/16
676	1-1/2	6	1-3/8	13/16	5/16x5/32
667	2	6	1-3/8	13/16	5/16x5/32
722	2	8	2-1/2	13/16	3/8x3/16
261	3	7-15/16	1-1/2	1	5/16x5/32
723	3	11-15/16	3-1/4	1-1/2	1/2x1/4

CUT OFF TOOLS

AVAILABLE IN STEEL OR CARBIDE



STANDARD

SERIES	SIZE	A	B	C
692-7900	00	15/16	1/8	1/8
668-720	0	1-3/4	3/16	3/16
790	1/2	1-1/8	1/4	3/16
666	1	1-3/4	3/16	1/4
721	1	2-1/4	3/16	1/4
7910	1	2-1/4	3/8	3/8
791	1-1/3	2-3/4	1/2	3/8
676	1-1/2	4	3/8	1/2
667	2	4	3/8	1/2
722	2	4	1/2	1/2
669	2-1/2	4-1/4	1/2	1
332	2-1/2	5-1/2	5/8	3/4
723	3	6	1	1/2