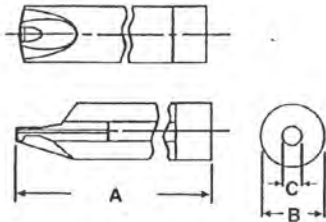


ITAYA

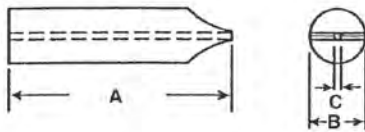
With numerous machine types and sizes it is impractical to list every piece of tooling available. Please call if you have something special or are in need of a tool that can be produced from a sample or sketch.

QUILLS



SIZE	A	B	C
MCS-4 E&G	1.181	.315	.118
MCS-8-D, E&G SX-8	3.150	.500	.188
MCS-15, D, E&G SX-15	5.118	.984	.276
SX-30 MCS-30, E&G	7.874	1.653	.630

LINERS



SIZE	A	B	C
MCS-4, E&G	1.142	.117	SPECIFY
MCS-8 D, E&G MC X 10, SX8	4.075	.187	SPECIFY
MCS-15 D, E&G SX-15	5.787	.274	SPECIFY
SX-30 MCS-30, E&G	7.283	.628	SPECIFY

LINER LENGTH MAY VARY ACCORDING TO MACHINE TYPE AND WIRE SIZE.

ROTARY GUIDES AND LINERS AVAILABLE FOR ALL MACHINES

STANDARD TOOLING AVAILABLE FOR THE MCS SERIES MACHINES

German Tooling

D-1 Loop Tool
D-2 Loop Tool
D-3 Body Tool
D-4 Second Loop
D-5 Loop/Tool
D-7 Center

English Tooling

E-1 Loop Tool
E-2 Support
E-3 Body Tool
E-4 Second Loop
E-5 Support

Double & Single Torsion Tooling

WT-1 Bend Tool
WT-2 (E-2)
WT-3 Body Tool
WT-4 (E-5)
WT-5

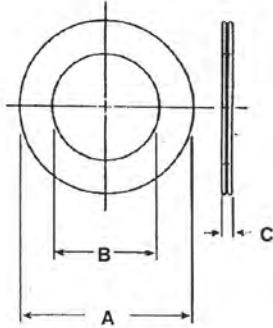
Wire Guides F-12
Wire Guides F-13
Quill Assem
Quill Insert
Quill Liner
Feed Rolls
D-E6 Cutter

Common Tooling

WT-1/WT-5
WT-4/E-5
WT-2/E-2
E-1/D-1/D-5

ITAYA

FEED ROLLS



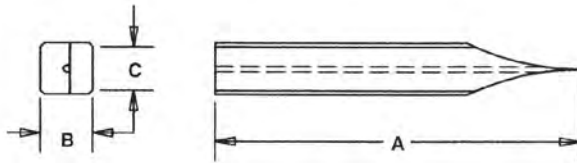
STANDARD

SIZE	A	B	C
MCS-4	.948	.630	.079
MCT-10E	1.496	.945	.157
D7E	2.343	1.378	.157
MCS8, D, E&G PC-8 SX8, MCX10	2.748	1.750	.157
MCS, 15 D, E, G SX15, PC-15	3.910	2.441	.236
MCX-20			
MCT-20	2.708	1.654	.236
MCS-30 PC-35 SX-30	5.197	3.150	.394

THE OUTSIDE DIAMETER MAY VARY ACCORDING TO MACHINE AND SPECIFIED WIRE SIZE.

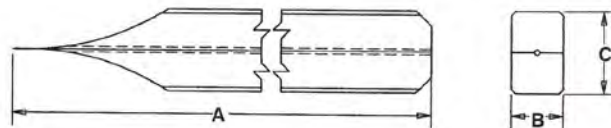
GUIDES

SPECIFY SINGLE OR DOUBLE POINT, R.H. OR L.H. COILING.



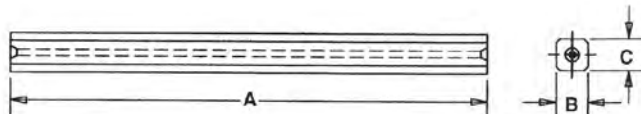
PRELIMINARY GUIDE

SIZE	A	B	C
D7E	2.420	.157	.236
PC8, MCX10	1.811	.236	.394
MCT10	1.496	.236	.236
PC15	2.843	.394	.630
PC35	4.016	.630	.630



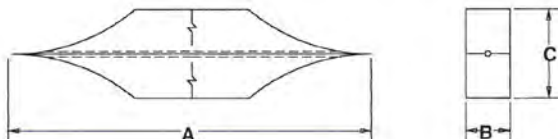
FINAL GUIDE

SIZE	A	B	C
PC8 MCX10	2.618	.236	.394
PC15	3.780	.394	.630
PC35	5.866	.630	.945



INTERMEDIATE/MISC. GUIDES

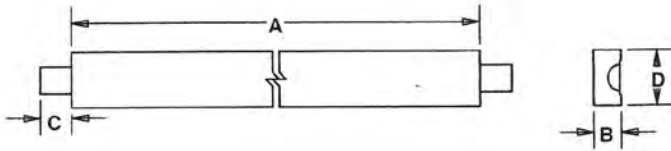
SIZE	A	B	C
MCX10	3.15	.236	.236
MCT-10	4.528	.236	.236
PC-35	6.260	.630	.630



ITAYA

ARBORS

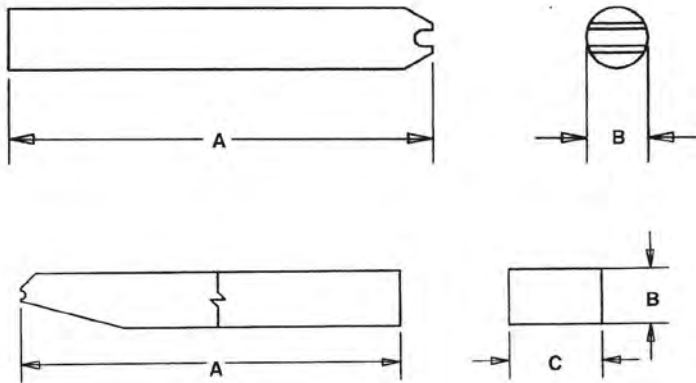
SPECIFY MACH SIZE, TYPE OF ARBOR, COILING DIA. AND R.H. OR L.H.



STANDARD

SIZE	A	B	C	D
D7E	2.362	.189		.197
PC-8	5.905	.236	.315	.118
PC-15	9.055	.394	.591	.484
PC-35	13.780	1.024	.630	.591

COILING POINTS

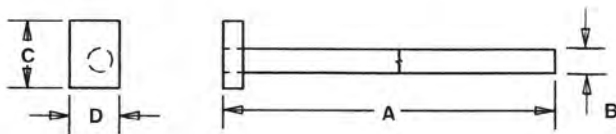


STANDARD

SIZE	A	B	C
D7E	1.299	.189	
PC-8	1.583	.157	.394
PC-15	2.362	.157	.394
PC-35	3.937	.709	
PC-35	3.937	.433	.709

PITCH TOOLS

SPECIFY WEDGE OR PUSH TYPE, R.H. OR L.H. COILING.



STANDARD

SIZE	A	B	C	D	E
D7E	3.621	.189	.535	.394	.157
PC8			2.165	.866	.492
PC-15			3.425	1.299	.768
PC-15	2.441		.236	.236	
PC-35	4.331		.354	.354	