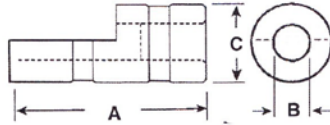


# ASAHI

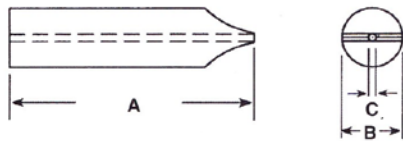
## QUILLS



### STANDARD

SIZE	A	B	C
NSF-2U	3.685	.438	1.000
NSF-3U	4.437	.790	1.732

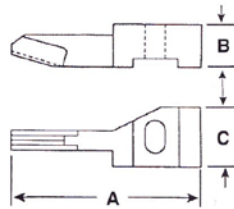
## LINERS



### STANDARD

SIZE	A	B	C
NSF-2U	4.500	.437	SPECIFY
NSF-3U	5.709	.788	SPECIFY

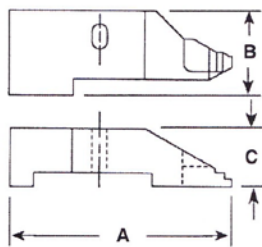
## BODY TOOLS



### STANDARD

SIZE	A	B	C
NSF-2U	3.370	.787	1.087
NSF-3U	3.898	1.180	1.338

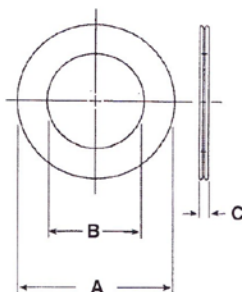
## ARBORS



### STANDARD

SIZE	A	B	C
NSF-2U	MFG. TO SPECIFICATIONS		
NSF-3U	3.425	1.339	.906

## FEED ROLLS



### STANDARD

SIZE	A	B	C
NSF-2U	6.000	4.000	.315
NSF-3U	6.378	3.937	.788