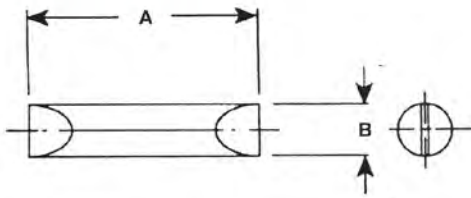


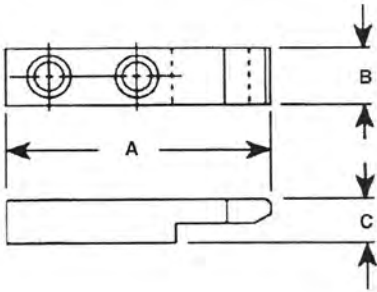
AIM

COILING POINTS



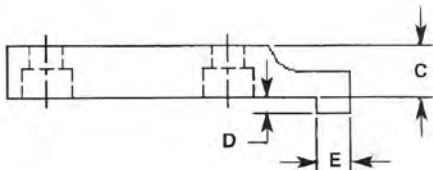
STANDARD

SIZE	A	B
100	1-1/8	3/16
1000	1-3/4	3/8
1500	2-1/8	1/2
2000	2-11/16	5/8
2500	3	1
3000	4	1



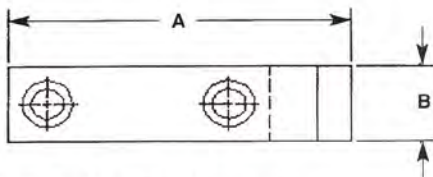
TORSION

SIZE	A	B	C
100	1-5/64	1/4	1/4
1000	2-1/4	1/2	3/8
1500	2-7/16	5/8	15/32
2000	3-1/2	3/4	5/8
2500	4-1/4	1	11/16
3000	4-3/4	1	3/4

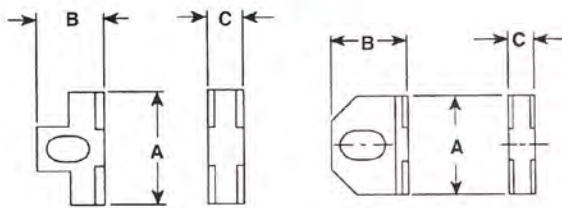


PT-5TH AXIS

SIZE	A	B	C	D	E
1000	2-1/4	1/2	3/8	11/64	1/4
1500	2-7/16	5/8	15/32	1/4	5/16
2000	3-1/2	3/4	5/8	5/16	3/8
2500	4-1/4	1	11/16	1/2	1/2
3000	4-3/4	1	3/4	1/2	1/2

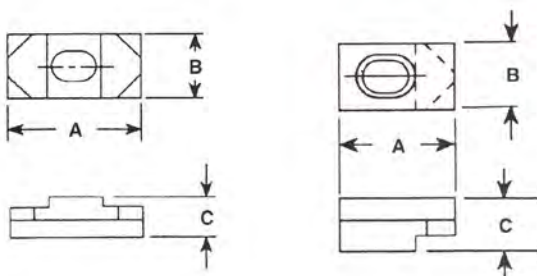


BLOCK GUIDES



STANDARD

SIZE	A	B	C
100	1/2	13/32	1/8
1000	1-1/8	5/8	5/16
1500	1-7/16	13/16	3/8
2000	1-3/4	7/8	7/16
2500	2-1/2	1-1/4	3/4
3000	3-1/8	1-5/8	1

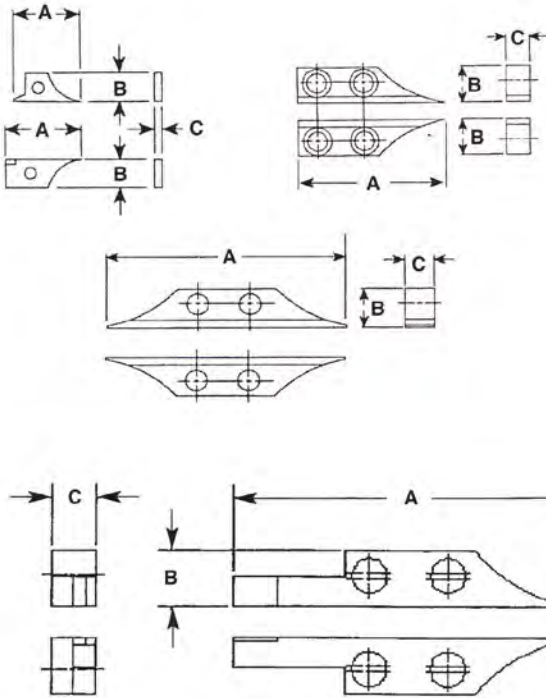


TORSION

SIZE	A	B	C
100	9/16	3/8	5/16
1000	5/16	9/16	7/16
1500	1-1/4	3/4	19/32
2000	1-11/16	7/8	9/16
2500	2-1/8	1-1/8	3/4
3000	3	1-5/8	1

AIM

GUIDES



FINAL - PRELIMINARY - TORSION

SIZE	A	B	C	DESCRIPTION
100	1-31/64	3/8	5/16	PRELIM./FINAL
1000	2-3/4	11/16	1/2	PRELIM./FINAL
1500	3-1/4	15/16	11/16	PRELIM./FINAL
2000	5-9/16	1-1/4	13/16	PRELIM./FINAL
2500	6-3/4	1-3/8	1	PRELIM./FINAL
3000	6-5/8	1-3/4	1-3/4	PRELIM./FINAL
3000	6-5/8	1-3/4	1-3/4	TORS./FINAL

INTERMEDIATE

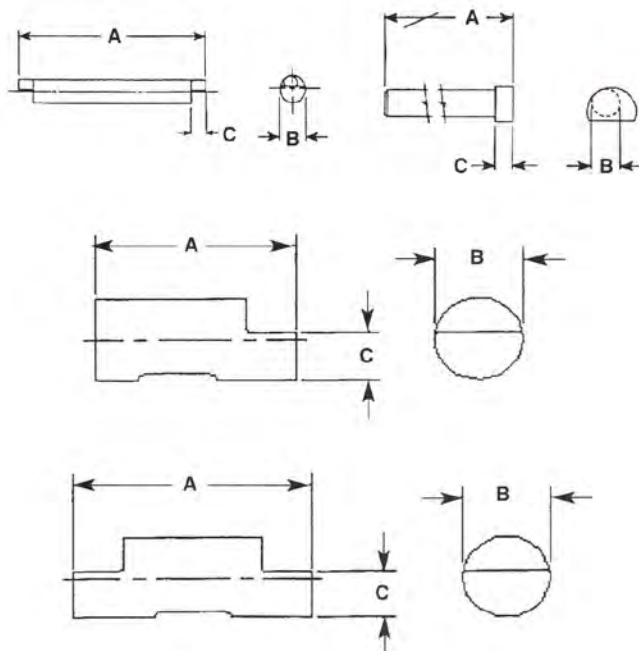
SIZE	A	B	C
1000	4	11/16	1/2
1500	6	15/16	11/16
2000	6-5/8	1-1/4	13/16
2500	8-1/4	1-3/8	1
3000	7-1/4	1-3/4	1-3/4

EXTENDED FINAL GUIDES

SIZE	A	B	C
100	2-1/32	3/8	5/16
1000	3-7/8	11/16	1/2

ARBORS

SPECIFY: MACHINE SIZE, TYPE OF ARBOR, COILING DIA. AND R.H. OR L.H.



STANDARD

SIZE	A	B	C
100	2-1/4	3/16	1/8
1000	3-1/4	7/16	1/4
1500	4-1/2	5/8	5/16
2000	5-1/2	3/4	3/8
2500	6-3/4	1-1/8	5/8
3000	7-1/2	1-1/4	7/8

TORSION

SIZE	A	B	C
100	5/8	3/16	SPECIFY
1000	1-1/8	1/4	SPECIFY
1500	1-1/2	3/8	SPECIFY
2000	1-3/4	5/8	SPECIFY
2500	2	7/8	SPECIFY
3000	2-1/2	7/8	SPECIFY

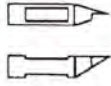
DOUBLE TORSION

SIZE	A	B	C
100	3/4	3/16	SPECIFY
1000	1-3/8	1/4	SPECIFY
1500	1-1/2	3/8	SPECIFY
2000	2	5/8	SPECIFY
2500	2-3/8	7/8	SPECIFY
3000	2-7/8	7/8	SPECIFY

AIM

PENCIL ARBORS

IDEAL FOR LARGE WIRE AND SMALL INDEX APPLICATIONS.
AVAILABLE FOR ALL MACHINES.

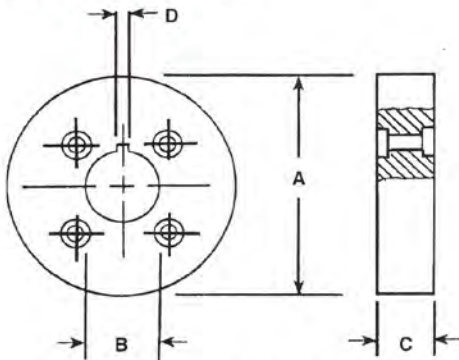


TORSION

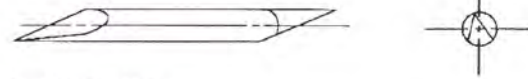
SPECIFY: R.H. OR L.H. AND TIP SIZE

FEED ROLLS

SUPPLIED IN STEEL OR CARBIDE. FOR #2-1/2 AND 3000 SIZES, ONLY STEEL IS RECOMMENDED



SPECIFY: NUMBER OF GROOVES AND THE SIZE AND SHAPE OF MATERIAL BEING PROCESSED.



STANDARD

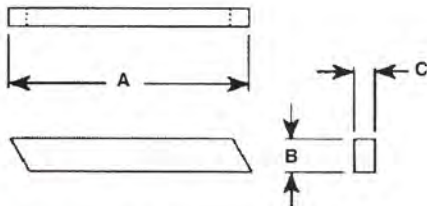
SPECIFY: R.H. OR L.H. OR POINT ONLY

STANDARD

SIZE	A	B	C	D
100	2.000	.500	.313	1/8 X 1/16
1000	3.500	.750	.500	3/16 X 3/32
1500	4.500	1.250	.688	5/16 X 5/32
2000	6.000	1.813	.813	1/2 X 1/4
2500	8.000	2.000	1.000	5/8 X 5/16
3000	8.000	2.250	1.750	5/8 X 5/16

CUT OFF TOOLS

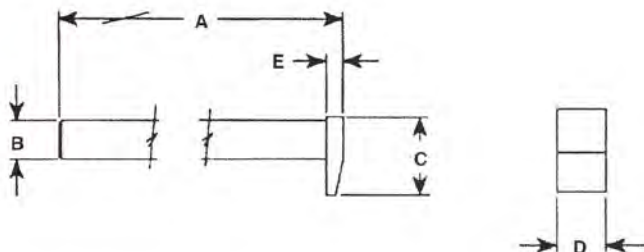
AVAILABLE IN STEEL OR CARBIDE



STANDARD

SIZE	A	B	C
100	1-3/4	3/16	3/16
1000	2-1/4	5/16	3/16
1500	2-3/4	7/16	7/16
2000	4	1/2	1/2
2500	6	7/8	5/8
3000	6	1	3/4

PITCH TOOLS



STANDARD

SIZE	A	B	C	D	E
100	5-3/8	3/16	3/8	1/4	3/32
1000	9-1/2	7/16	27/32	7/16	3/16
1500	12	9/16	1-5/32	13/16	7/32
2000	14-1/2	3/4	1-5/16	3/4	1/4
2500	14-7/8	7/8	2-1/2	2	1/2
3000	15	1	3	2-1/2	1/2